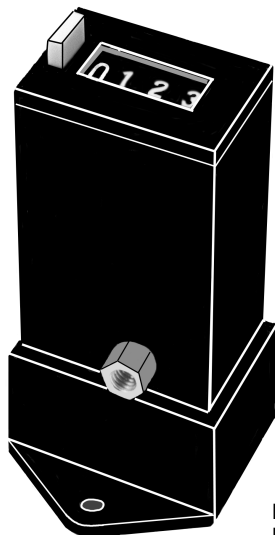


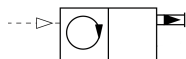
Panel or Base Mounted Pneumatic Counters



Standard Clip Mounting



Base Mount



These pneumatic totalizers can be used as an event, part or lot counter. The counter registers pneumatic impulses on 4, 6 or 8 digit displays. Standard units operate with impulse pressures between 25 and 100 PSI. Low pressure models operate between 7.5 and 30 PSI. A variety of options include panel mounting with screws or mounting clips and surface mount with base or rear stud. The counters are available with or without manual reset.

Description		Catalog Number			
		Panel Mounted		Surface Mounted	
		Standard Clip Mtg.	Screw Fastening	With Base	Stud Mounting
With Manual Reset	4 Digit	PM14-21	PM14-11	APM14-01	PM14-01
	6 Digit	PM16-21	PM16-11	APM16-01	PM16-01
	8 Digit	Not Available	Not Available	Not Available	Not Available
Without Manual Reset	4 Digit	PM14-20	PM14-10	APM14-00	PM14-00
	6 Digit	PM16-20	PM16-10	APM16-00	PM16-00
	8 Digit	PM18-20	PM18-10	APM18-00	PM18-00

Options

For Low pressure version (7.5 to 30 PSI) add an "L" prefix to the catalog number.

A manual reset guard can be added to help prevent accidental resetting of the counter. Add suffix "V" to the catalog number.

For a spade key reset add suffix "VS" to the catalog number.

For a secret reset add an "S" suffix.

Standard designs have 10-32 ports, specify adaptor for 1/8 port if required.

Technical Specifications

Op. Pressure:

25-100 PSI Std.
7.5 to 30 PSI Low Press.

Connections:

10-32 (M5) port, Option 1/8.

Display:

Black with white digits

Reset:

With or without manual reset.

Media:

Filtered air

Duty Cycle:

Continuous
Min. pulse duration 8 ms
Min. pause 10 ms

Operating Ambient:

0°C to +60°C (32°F to 140°F)

Weight:

2.5 oz. To 4.5 oz.

Materials:

Molded body, steel frame.

Dimensions (approx.):

4 Digit - 7/8" H x 1 1/2" W x 2 5/8" D.
6,8 Digit - 7/8" H x 1 15/16" W x 2 5/8" D.
For Screw mtg. add 1" to H dim.
For base mtg. add 1" to D dim.

Panel Cut Out:

4 Digit - 7/8" H x 1 5/16" W
6,8 Digit - 7/8" H x 1 7/8" W