

MAXIMATOR®

Maximum Pressure.

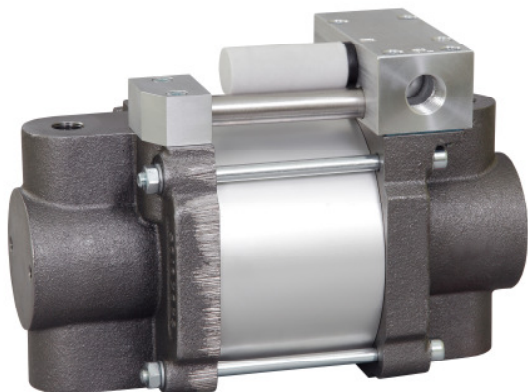


High Pressure Technology • Testing Equipment
Hydraulics • Pneumatics

Technical Data Sheet

S25D

» Oil service



S25D
double acting, single air drive head

Technical Data:

Air drive pressure:	1-10 bar / 14,5 - 145psi
Calculated Outlet Pressure at an air drive of 10 bar/145 psi:	240 bar/ 3,480 psi
Pressure ratio:	1:24
Displacement volume/double stroke	39.2 cm ³ / 2.39 cu.inch

Connections:

Inlet:	3/4 BSP
Outlet:	3/4 BSP
Air drive:	1/2 BSP
Maximum operating temperature:	60°C
Net weight:	14.5 kg

Pressure and flow performances, please see enclosed graph.

Wetted materials of construction:

Top cap:	Aluminium
Air cylinder:	Aluminium
Seal package:	Polyurethane, NBR
Pump Body:	GGG50
HP Piston:	1.4112 (hardened)

Approximate Dimensions:

Height:	260 mm
Depth:	135 mm
Width:	175.5 mm

Available Options:

Special inlet and outlet ports, i.e. NPT	S25D-NPT
Special seal material to handle special fluids on request.	

Available Accessories:

Air control units with filter pressure regulator, control pressure gauge and shut off valve:	S25D with C1.5
To protect the pump against excessive outlet pressures or to limit the outlet pressure, a safety valve can be fitted to the air control unit in the air drive line:	S25D with C1.5/SVair (The required outlet pressure has to be indicated.)

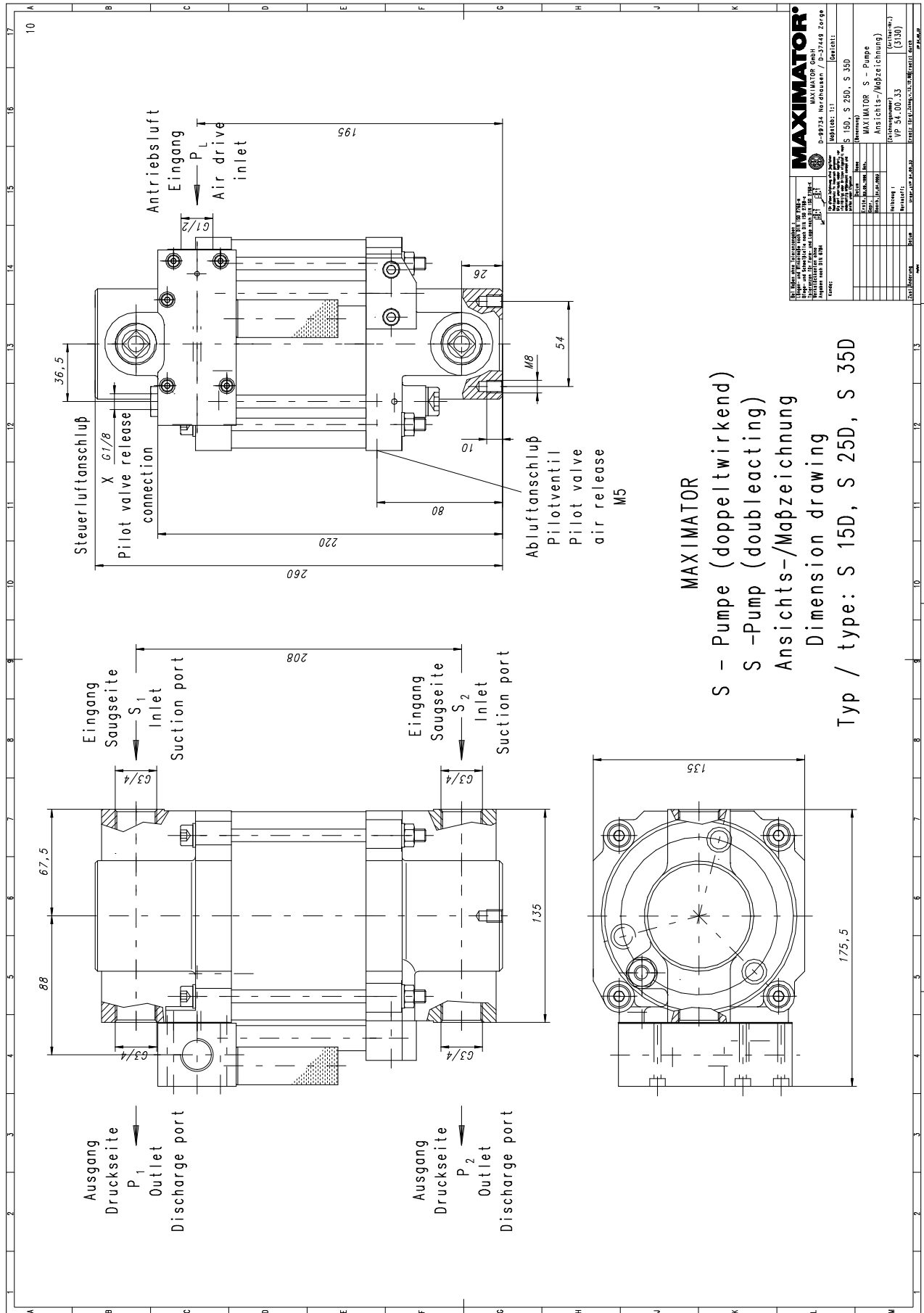
Please consult factory for more information. All technical and dimensional information subject to change. All General Terms and Conditions of sale, including limitations of our liability, apply to all products and services sold.

MAXIMATOR®

Maximum Pressure.



High Pressure Technology • Testing Equipment
Hydraulics • Pneumatics



Leistungsdiagramm/Performance Graph S 25 D

Prüfflüssigkeit/Test Liquid: Wasser-Öl-Emulsion/Water Oil Emulsion ca. 1 - 10 cst

