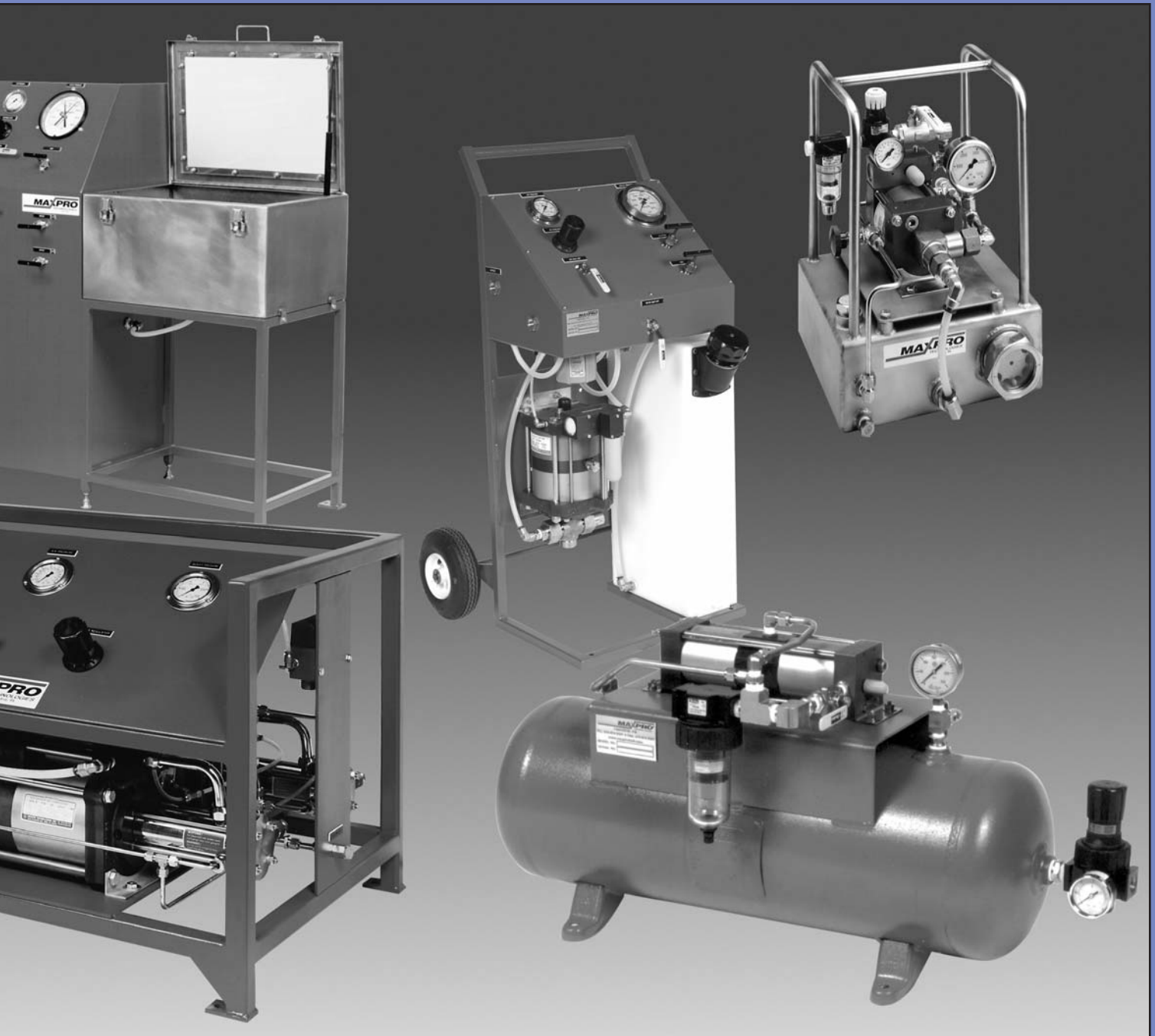


# Packaged Power Systems



**MAXPRO**<sup>®</sup>  
TECHNOLOGIES

Accepting VISA, MasterCard and American Express.

## Index

Pump Skids .....	2
Power Packs .....	3
Portable Test Carts .....	4
Test Benches .....	5
Air Amplifier Systems .....	6
Gas Booster Systems .....	7

## Features

- Easy installation and operation
- No electrical power required (unless requested for optional accessories)
- Efficient source for increasing power
- All systems 100% tested
- Fully assembled for turn-key installation



# Packaged Power Systems

MAXPRO Technologies has developed a line of standard, packaged power systems appropriate for a wide range of liquid, air and gas applications. These systems utilize Maximator® liquid pumps, air amplifiers and gas boosters and vary in size, flow capabilities, styles and pressure ranges ... from 30 psi to 60,000 psi. All MAXPRO package systems are air driven, fully assembled and tested to ensure easy and dependable start-up at your facility.

MAXPRO offers complete design, technical and service support for all packaged systems, as well as a repair and refurbishing service.

## Pump Skids OIL OR WATER

- Compact, complete packaged systems
- Standard powder coated or stainless steel frame

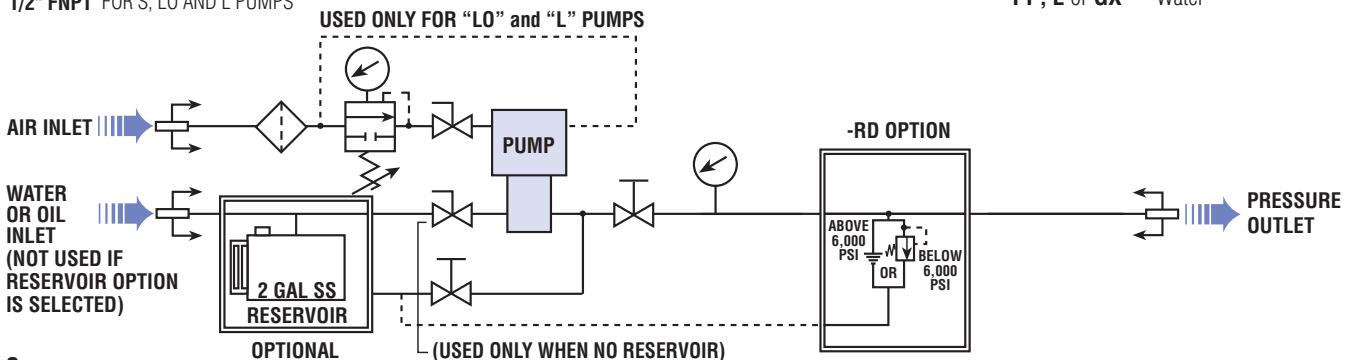
Pump skids are compact systems with most components mounted within the boundaries of the frame. The systems can be built for water or oil service and have a control panel to contain all gauges and valves. A variety of pressure ranges and flows are available, for testing components, ranging from 500 psi to 60,000 psi. These systems can be supplied with a reservoir or a city water, valved inlet. Reservoirs come with a fill/breather cap, liquid level sight gauge and drain connection.

### ORDERING INFORMATION

MTPS	05	-	W	-	PP72	-	2G	-	RD
Pressure	01 1,000 psi	15 15,000 psi					Reservoir		Options
	03 3,000 psi	20 20,000 psi					N None		RD Relief device
	05 5,000 psi	30 30,000 psi					2G 2 gallon S.S.		
	10 10,000 psi	60 60,000 psi					8G 8 gallon S.S.		
			Service				Pump		
			0 Oil				PPO, S or LO Oil		
			W Water				PP, L or GX Water		

### FLOW SCHEMATIC

1/4" FNPT FOR PPO AND PP PUMPS  
1/2" FNPT FOR S, LO AND L PUMPS



# Power Packs

## OIL OR WATER

- Lightweight, portable
- Economical hydraulic power
- Totally self-contained package

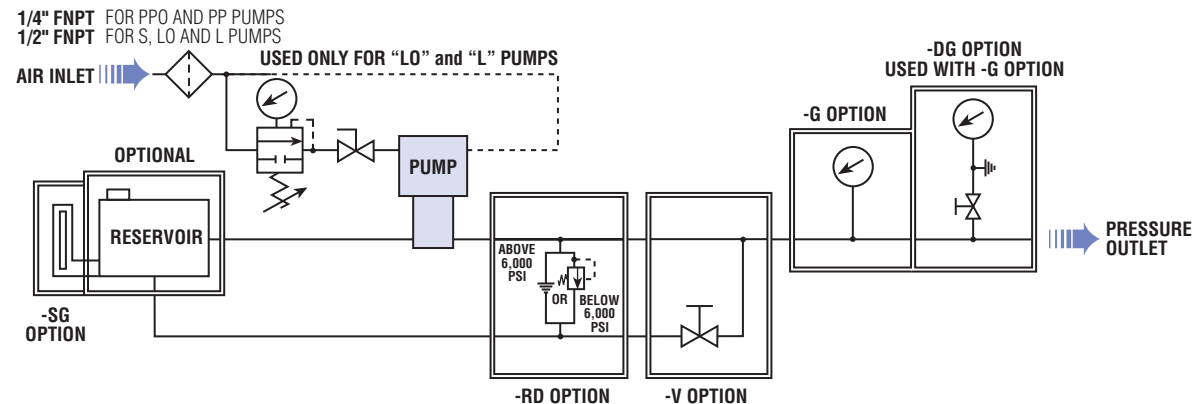
Power packs are a compact, lightweight and economical way to generate pressure using only a shop air supply. These power packs are available for hydraulic power or water pressure for hydrostatic testing. A variety of pressure ranges are available to fit your specific requirements, from low pressures of 500 psi and 2,000 psi to high pressures of 30,000 psi and 60,000 psi. You may choose from a number of options to complete the power pack best suited for your application. All reservoirs include a fill/breather cap and connections for a sight gauge, drain and return line.

### ORDERING INFORMATION

MTPP		03	-	0	-	PPO	-	1G	-	SG	-	G
Pressure				Service				Reservoir		Options		
01	1,000 psi			0	Oil			Carbon Steel		SG	Reservoir sight gauge	
02	2,000 psi			W	Water			Stainless Steel		G	Outlet pressure gauge	
03	3,000 psi									DG	Dual outlet gauges	
05	5,000 psi									V	Pressure vent valve	
10	10,000 psi									RD	Pressure relief device	
15	15,000 psi					PPO, S or LO	Oil					
20	20,000 psi					PP or L	Water					
30	30,000 psi											
60	60,000 psi											



### FLOW SCHEMATIC



Larger, cart mounted and bench type systems are also available from MAXPRO Technologies, Inc.

# Portable Test Carts

## OIL OR WATER

- Hydrostatic testing
- Cycle testing
- Hydraulic power
- Leak testing

Portable test carts are ideal for generating elevated hydraulic or water pressures, using only shop air, at a variety of locations throughout a facility. They are completely portable and require only a shop air line to operate if the reservoir option is selected.

A variety of pressure ranges are available to fit your specific requirements, from low pressures of 1,000 psi to high pressures of 60,000 psi. You may choose from a number of options to complete the test cart best suited for your application. These carts may also be equipped with air amplifiers or gas boosters for high pressure generation in leak testing, bottle filling or operation of pneumatic tools or cylinders. The optional stainless steel reservoirs are equipped with a fill/breather cap, sight gauge, and drain connection.

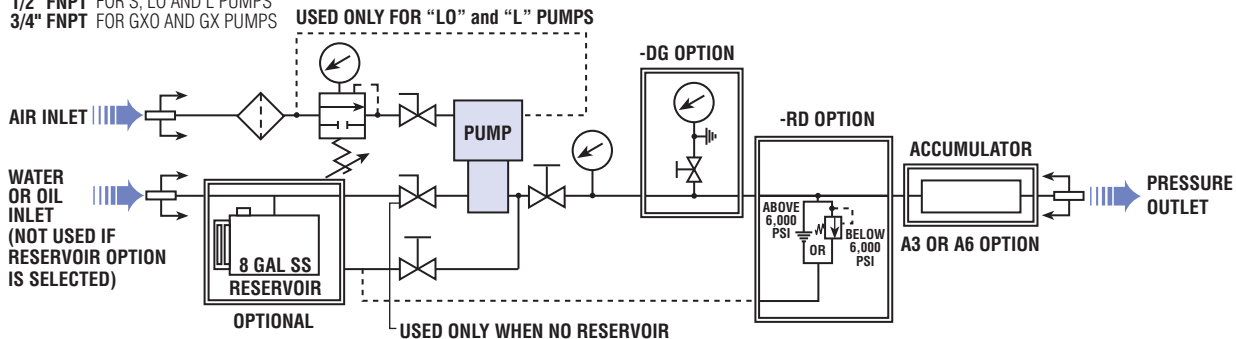
### ORDERING INFORMATION

<b>MTTC</b>	<b>20</b>	-	<b>0</b>	-	<b>LO</b>	-	<b>8G</b>	-	<b>A3</b>	-	
<b>Pressure</b>			<b>Service</b>						<b>Options</b>		
<b>01</b>	1,000 psi		<b>0</b>	Oil					<b>DG</b>	Dual outlet gauges	
<b>03</b>	3,000 psi		<b>W</b>	Water					<b>RD</b>	Pressure relief device	
<b>05</b>	5,000 psi								<b>A3</b>	Accumulator, 36 in. <sup>3</sup>	
<b>10</b>	10,000 psi								<b>A6</b>	Accumulator, 66 in. <sup>3</sup>	
<b>15</b>	15,000 psi		<b>Pump</b>						NOTES: 1. Accumulators are rated for 10,000 psi maximum.		
<b>20</b>	20,000 psi		<b>PPO, S, LO or GXO</b>	Oil					2. For -DG Option, specify the lower gauge pressure		
<b>30</b>	30,000 psi		<b>PP, L or GX</b>	Water							
<b>60</b>	60,000 psi		<b>Reservoir</b>								
			<b>Stainless Steel</b>								
			<b>N</b>	None							
			<b>2G</b>	2 Gallon							
			<b>8GP</b>	8 Gallon Polyethylene							
			<b>8GSS</b>	8 Gallon Stainless Steel							



### FLOW SCHEMATIC

1/4" FNPT FOR PPO AND PP PUMPS  
 1/2" FNPT FOR S, LO AND L PUMPS  
 3/4" FNPT FOR GXO AND GX PUMPS



This cart system is also available for use with an air amplifier or gas booster. Smaller portable power packs are also available from MAXPRO Technologies, Inc.

# Test Benches

## OIL, WATER, AIR OR GAS

- Hydrostatic testing
- Burst testing
- Cycle/fatigue testing
- Leak testing

MAXPRO test benches are designed for durability, ease of use and accessibility. These test benches can be equipped for use with oil, water, air, gas or any combination of test medium. The same test bench could be set up for hydrostatic testing with water and/or leak testing with gas.

MAXPRO test benches can be provided with manual control or push button control to handle your specific application.

All test benches are provided with an 8-gallon stainless steel reservoir, air controls, valves and gauge for manual operation. For a push button control system, you do not need to specify the remote control options nor gauge contact ring as they would be automatically included. The pressure transducer would still be an option for system control, pressure recorder connection or computer interface.

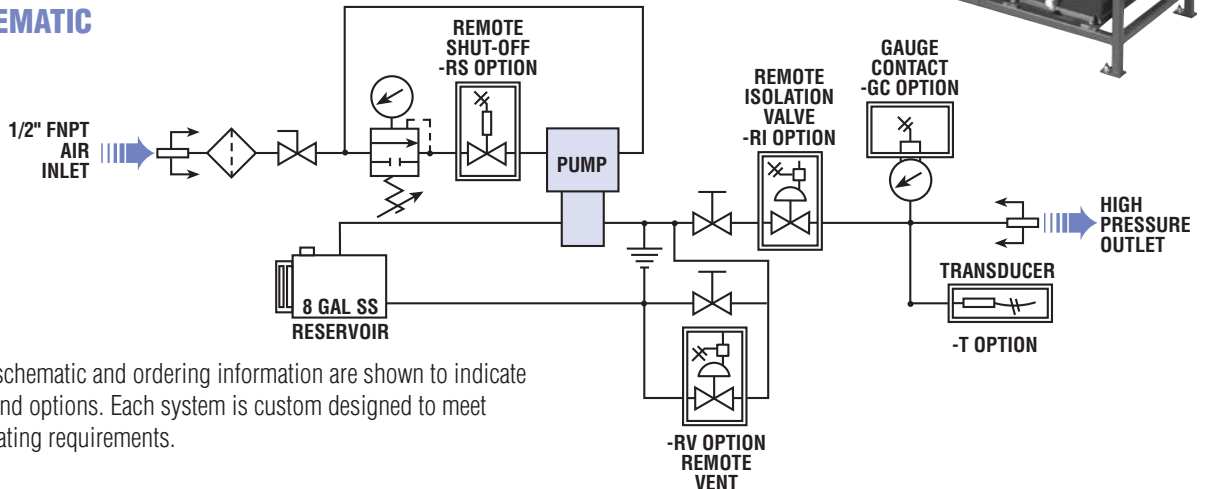
Test chambers can be included and can be horizontal or vertical. When specifying a test bench that is to include a test chamber with a windowed door, please specify the required chamber size.



### ORDERING INFORMATION\*

<b>MTTB</b>	<b>10</b>	<b>-</b>	<b>W</b>	<b>-</b>	<b>G</b>	<b>-</b>	<b>M</b>	<b>-</b>	<b>L</b>	<b>-</b>	<b>N</b>	<b>-</b>	<b>DLE</b>	<b>-</b>	<b>RS</b>	<b>-</b>	<b>Options</b>	
<b>Pressure</b>			<b>Service</b>								<b>Air Amplifier</b>							
05	5,000 psi		O	Oil							GPLV	2:1 amplifier					GC	Gauge electrical contact ring
10	10,000 psi		W	Water							DLA	5:1 and 15:1 amplifiers					RI	Remote operating isolation valve
15	15,000 psi		A	Air to 5,000 psi maximum							N	None					RS	Remote operating pump shut-off valve
20	20,000 psi		G	Gas to 18,000 psi maximum					<b>Liquid Pump</b>								RV	Remote operating vent valve
30	30,000 psi		N	None - for second service					LO	Oil pumps							T	Pressure transducer specify 0-10V or 4-20 ma output
60	60,000 psi								L	Water pumps							DP	Digital pressure indicator
									N	None							PI	Peak pressure indicator
											<b>Gas Booster</b>							
											DLE	Gas booster						
											N	None						
<b>Operation</b>																		
M	Manual																	
R	Push button																	

### FLOW SCHEMATIC



\* The photos, schematic and ordering information are shown to indicate capabilities and options. Each system is custom designed to meet specific operating requirements.

# Air Amplifier Systems



- High pressure air for robotics and injection molding
- Boost pressure to pneumatic tools, clamps and cylinders
- Maintain elevated pressures to machinery and test equipment
- Self-contained package

MAXPRO Air Amplifier Systems are ideal for turn-key installation at work stations or machine centers to boost plant air pressure for tools or operation of pneumatic clamps, cylinders and other equipment. These systems provide short-term high flow air or constant flow with reserve, at a constant regulated output pressure. Storage tank is per A.S.M.E. Code and CRN (Canada) and comes with a safety relief valve, and pressure gauge.

Each 200 psi and 250 psi system is also equipped with an inlet air filter and outlet pressure regulator with gauge, all mounted on a common base. The 500 psi and 600 psi systems are equipped with an inlet air filter and inlet air pressure regulator with gauge. High pressure outlet regulator with gauge is available as an option (Add “-R” for a 1/4” FNPT regulator or “-1/2 R” for a 1/2” FNPT high flow regulator to system catalog number). MAXPRO Air Amplifier Systems are available in a number of arrangements and custom designed units are also available to suit your specific flow and pressure requirements. Please consult factory.

## TECHNICAL DATA

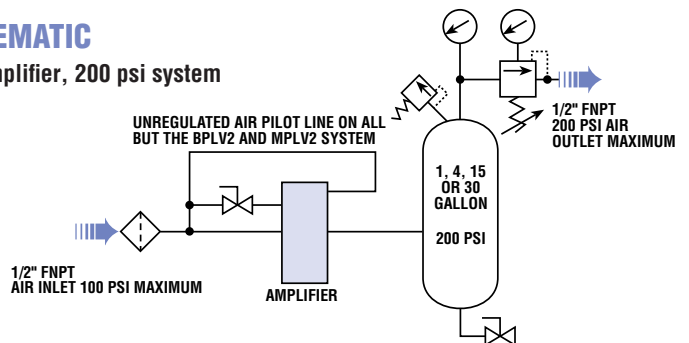
SYSTEM CATALOG NUMBER	AIR AMPLIFIER TYPE	TANK SIZE (GAL.)	SYSTEM RATING (PSI)	CONNECTIONS		OVERALL SIZE (IN.)	WEIGHT (LBS.)	MOUNTING DIMENSIONS (IN.)
				INLET (FNPT)	OUTLET (FNPT)			
<b>2:1 Ratio Systems</b>								
AS-BPLV2-1G	BPLV2	1.6	250	1/4	1/4	13L X 8W X 22H	26	7.13 X 9.00 X 0.38
AS-MPLV2-1G	MPLV2	1.6	250	1/2	1/2	13L X 8W X 22H	60	7.13 X 9.00 X 0.38
AS-MPLV2-4G	MPLV2	4	250	1/2	1/2	22L X 15W X 18H	72	5.00 X 12.25 X 0.44
AS-MPLV2-10GH	MPLV2	10	200	1/2	1/2	36L X 14W X 18H	63	9.25 X 18.00 X 0.44
AS-SPLV2-4G	SPLV2	4	250	1/2	1/2	22L X 16W X 22H	78	5.00 X 12.25 X 0.44
AS-SPLV2-10GH	SPLV2	10	200	1/2	1/2	36L X 14W X 22H	71	9.25 X 18.00 X 0.44
AS-SPLV2-15GH	SPLV2	15	200	1/2	1/2	39L X 14W X 24H	86	11.00 X 20.00 X 0.44
AS-GPLV2-4G	GPLV2	4	250	1/2	1/2	22L X 20W X 26H	110	5.00 X 12.25 X 0.44
AS-GPLV2-15GH	GPLV2	15	200	1/2	1/2	39L X 15W X 26H	113	11.00 X 20.00 X 0.44
AS-GPLV2-30GH	GPLV2	30	200	1/2	1/2	44L X 17W X 32H	165	12.81 X 20.00 X 0.44
AS-2GPLV2-15GH	(2) GPLV2	15	200	(2) 1/2	1/2	39L X 18W X 26H	165	11.00 X 20.00 X 0.44
AS-2GPLV2-30GH	(2) GPLV2	30	200	(2) 1/2	1/2	44L X 18W X 32H	215	12.81 X 20.00 X 0.44
<b>Multiple Ratio Systems</b>								
AS-DLA5-15GH-200	DLA5	15	200	1/2	1/2	39L X 15W X 26H	118	11.00 X 20.00 X 0.44
AS-DLA5-30GH-200	DLA5	30	200	1/2	1/2	44L X 17W X 32H	170	12.81 X 20.00 X 0.44
AS-DLA5-4G	DLA5	4	500	1/2	1/2	20L X 26W X 26H	115	5.00 X 12.25 X 0.44
AS-DLA5-15G	DLA5	15	500	1/2	1/2	30L X 19W X 36H	150	9.50 X 22.00 X 0.38

### NOTE:

See Air Amplifier catalog for flow rates of appropriate Air Amplifiers. Dimensions are approximate and subject to change. Consult factory. A standard Air Amplifier System is piped with one common inlet for both air drive and air suction.

## FLOW SCHEMATIC

Typical 2:1 amplifier, 200 psi system

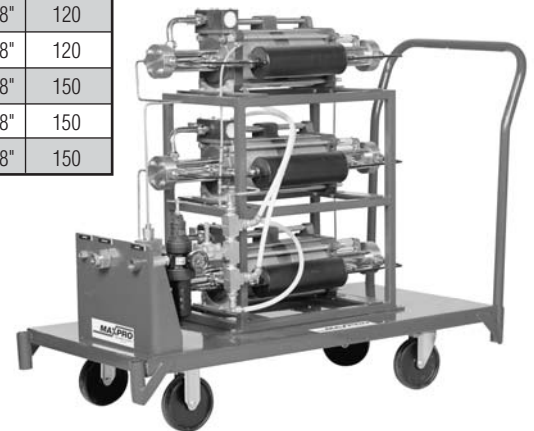
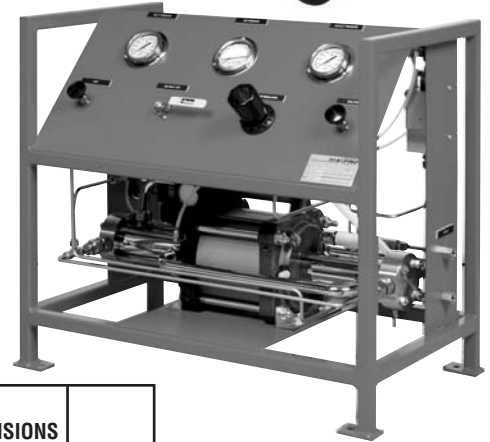


# Gas Booster Systems

- Testing of pressure components
- Low pressure gas reclaim from storage bottles
- Pressurizing gas cylinders, shock absorbers and injection molding
- Breathing gas systems for scuba and fire department tanks
- Boosting gas pressures from nitrogen generators and vaporizers

MAXPRO gas booster systems provide a compact, portable source for increasing gas pressures. These air driven booster packages are shipped assembled and fully tested, ready for turn-key installation. As with standard boosters, the gas booster systems require no electrical power, providing safe and economical operation.

Gas booster systems are capable of compressing most gases including nitrogen, argon, helium and hydrogen up to 15,000 psi. Systems for breathing air to 5,000 psi. All MAXPRO systems for use with hazardous gases are modified to ensure vent ports are piped to a common vent connection.

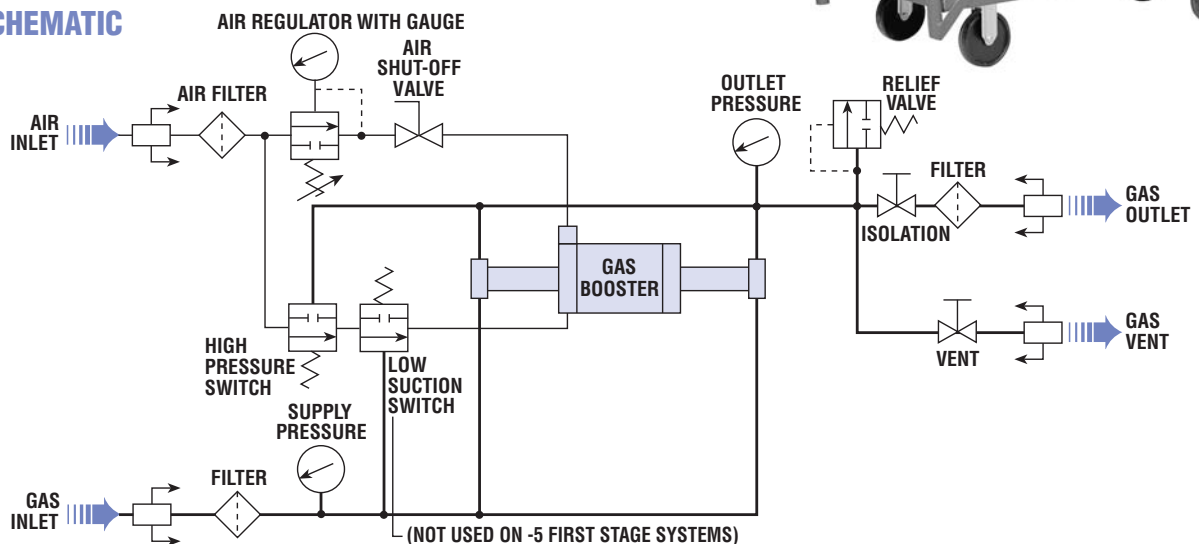


## TECHNICAL DATA

SYSTEM CATALOG NUMBER			GAS BOOSTER TYPE	SYSTEM RATING (PSI)	MINIMUM SUCTION PRESSURE	DIMENSIONS DP x HG x LG	WEIGHT
INERT GAS	HAZARDOUS GAS	OXYGEN GAS					
MTIG3-30	MTHG3-30	MT02-3-30	DLE30	3,000	175	16" x 23" x 28"	120
MTIG3-5-30	MTHG3-5-30	MT02-3-5-30	DLE5-30	3,000	40	16" x 23" x 28"	120
MTIG5-75	MTHG5-75	MT02-5-75	DLE75	5,000	300	16" x 23" x 28"	120
MTIG5-15-75	MTHG5-15-75	MT02-5-15-75	DLE15-75	5,000	150	16" x 23" x 28"	120
MTIG10-75-2	MTHG10-75-2	N/A	DLE75-2	10,000	725	16" x 23" x 38"	150
MTIG10-30-75-2	MTHG10-30-75-2	N/A	DLE30-75-2	10,000	220	16" x 23" x 38"	150
MTIG15-30-75-2	N/A	N/A	DLE30-75-2	15,000	400	16" x 23" x 38"	150

- NOTE:**
1. Various other gas booster models can be used to best fit your specific application.
  2. Schematic shown is the standard system. Other options may be added or removed as required.
  3. The hazardous gas systems have all vent ports plumbed to a common discharge port. This port must be plumbed to a safe vent area.
  4. The oxygen systems have all components cleaned for oxygen service.
  5. For higher flow rates and/or multiple stages, more than one booster may be used in the system.

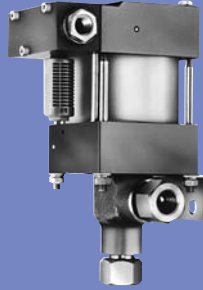
## FLOW SCHEMATIC



# OTHER MAXIMATOR® POWER PRODUCTS

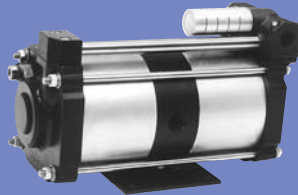
## Liquid Pumps

- Air driven to 60,000 psi
- Economic hydraulic power
- Requires no electrical power
- Variety of sizes and styles to suit your application



## Air Amplifiers

- Air driven to 5,000 psi
- Deliver increased air pressure to shop floor equipment and work stations
- Requires no electrical power
- Single or double acting models



## Gas Boosters

- Air driven to 21,750 psi
- Ideal for gas salvage
- Requires no lubrication or electrical power
- Unit is contaminant free
- For use with a variety of gases



## Repair & Refurbishing Service Available

- Guaranteed quality workmanship
- Cost effective
- Quick turn around
- Use original manufacture parts
- Factory support



7728 Klier Drive South ■ Fairview, Pennsylvania 16415  
Phone: 814-474-9191 ■ Fax: 814-474-9391  
Web Site: [www.maxprotech.com](http://www.maxprotech.com)  
E-mail: [sales@maxprotech.com](mailto:sales@maxprotech.com)



All technical and dimensional information subject to change.

All general terms and conditions of sale, including limitations of our liability, apply to all products and services sold.