

MAXIMATOR®

Maximum Pressure.

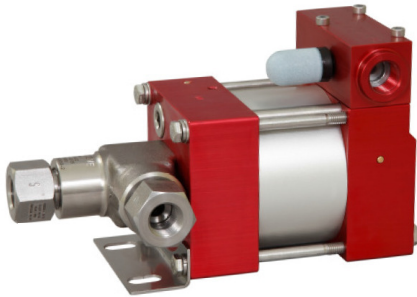


High Pressure Technology • Testing Equipment
Hydraulics • Pneumatics

Technical Data Sheet

PP189

» Oil & Water Service



PP189

Single Acting, Single Air Drive
Head (Standard= Bottom inlet)

Technical Data:

Air drive pressure:	1-10 bar / 14,5 - 145psi
Maximum Outlet Pressure: (When supplied with 10 bar/145 psi Air Drive)	2,200 bar/ 31,900 psi
Pressure ratio:	1:220
Displacement volume/double stroke	0.6 cm ³ / 0.04 Cubic. Inch
Connections:	
Inlet:	Standard: Bottom Inlet 3/8 NPT
Outlet:	3/8 NPT
Air drive:	1/4 NPT
Maximum operating temperature:	60°C
Net weight:	2.8 kg. (7 lbs.)

Pressure and flow performances, please see enclosed graph.

Wetted materials of construction:

Seal package:	PP189 (Polyurethane, NBR) PP189-VE (UHMWPE, FKM)
---------------	---

Pump Body: 1.4305

Piston: 1.4112 (hardened)

Fittings: 1.4104

Approximate Dimensions:

Height: 195 mm

Depth: 104 mm

Width: 112 mm

Available Options:

Seal material for oil & service:	PP189
Seal material for water service:	PP189-VE
Side inlet	PP189-S/ PP189-VES
Hand lever/ Spring return	PP189-HL (only available with seal package Polyurethane, NBR)
External pilot port modification	PP189-DIR
Special inlet and outlet ports, i.e. BSP	M 189 M189-VE

Special seal material to handle special fluids on request.

Available Accessories:

Air control Packages for the PP series are supplied with an air filter, regulator & on/off ball valve:	PP189-ACP
To protect the pump against excessive outlet pressures or to limit the outlet pressure, a safety valve fitted to the air control unit in the air drive line:	PP189-ACP/RV (The can be a required outlet pressure has to be indicated at time of order.)

Please consult factory for more information. All technical & dimensional data is subject to change.

All General Terms and Conditions of sale, including limitations of our liability, apply to all products and services sold.

Maximator PP189 High Pressure Liquid Pump Technical Data Sheet & Performance Graph (Page 1 of 2)



High Pressure Technology • Testing Equipment
Hydraulics • Pneumatics

Performance Graph PP189

