

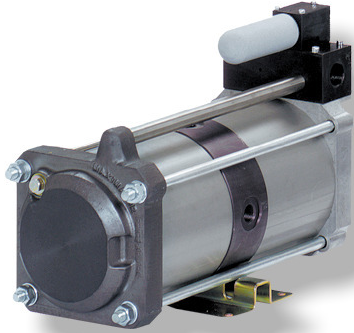
MAXIMATOR®

Maximum Pressure.



High Pressure Technology • Testing Equipment
Hydraulics • Pneumatics

Technical Data Sheet



Benefits

- Direct pressure increase for a single application
- No energy consumption by the air amplifier when the outlet pressure is reached
- Non electrical installation, so application in ex areas possible

Air Pressure Amplifier GPLV2

Technical Data:

Inlet pressure:	1 to 10 bar / 15 – 145 psi
Outlet pressure:	2 to max. 20 bar / 30 – 300 psi
Pressure ratio:	1:2
Medium:	Compressed air, nitrogen
Connections:	
Inlet:	1/2" NPT
Outlet:	1/2" NPT
Air drive:	1/2" NPT
Maximum operating temperature	60°C / 180°F
Net weight:	20.5 kg / 45 lbs.

Pressure and flow performances, please see enclosed graph.

Materials of Construction High Pressure Section:

Wetted material of construction:	light metal resp. stainless steel
Dynamic seals	special wear resisting PTFE (Teflon)
Accessories:	Air Control Package –ACP Comprising of: Air Filter, Pressure Regulator w/ Pressure Gauge & Shut-off Valve

System Options:

Air drive port	1/2" NPT
----------------	----------



Packaged Amplifier Systems: GPLV 2 / 30 Gal. / 200 psi

Comprising:

- GPLV2 Air amplifier
 - Filter, regulator with shut-off valve
 - Receiver 30 Gallon
 - Safety valve 200 psi
 - Outlet pressure gauge 0-200 psi
- This system is completely mounted, pressure tested and ready for connection.

Order Code: HPT-AS-GPLV2-30GH

Other Tank Options:

- GPLV2 / 15 Gallon Tank: Order code: HPT-AS-GPLV2-**15GH**
- GPLV2 / 60 Gallon Tank: Order code: HPT-AS-GPLV2-**60GH**

Upgrade / Modifications:

- GPLV2 / Dry Air Spool Modification: Order code: HPT-AS-**GPLV2-DAS-????**
- Dual GPLV2 / Dual Amplifiers: Order code: HPT-AS-**2GPLV2-????**

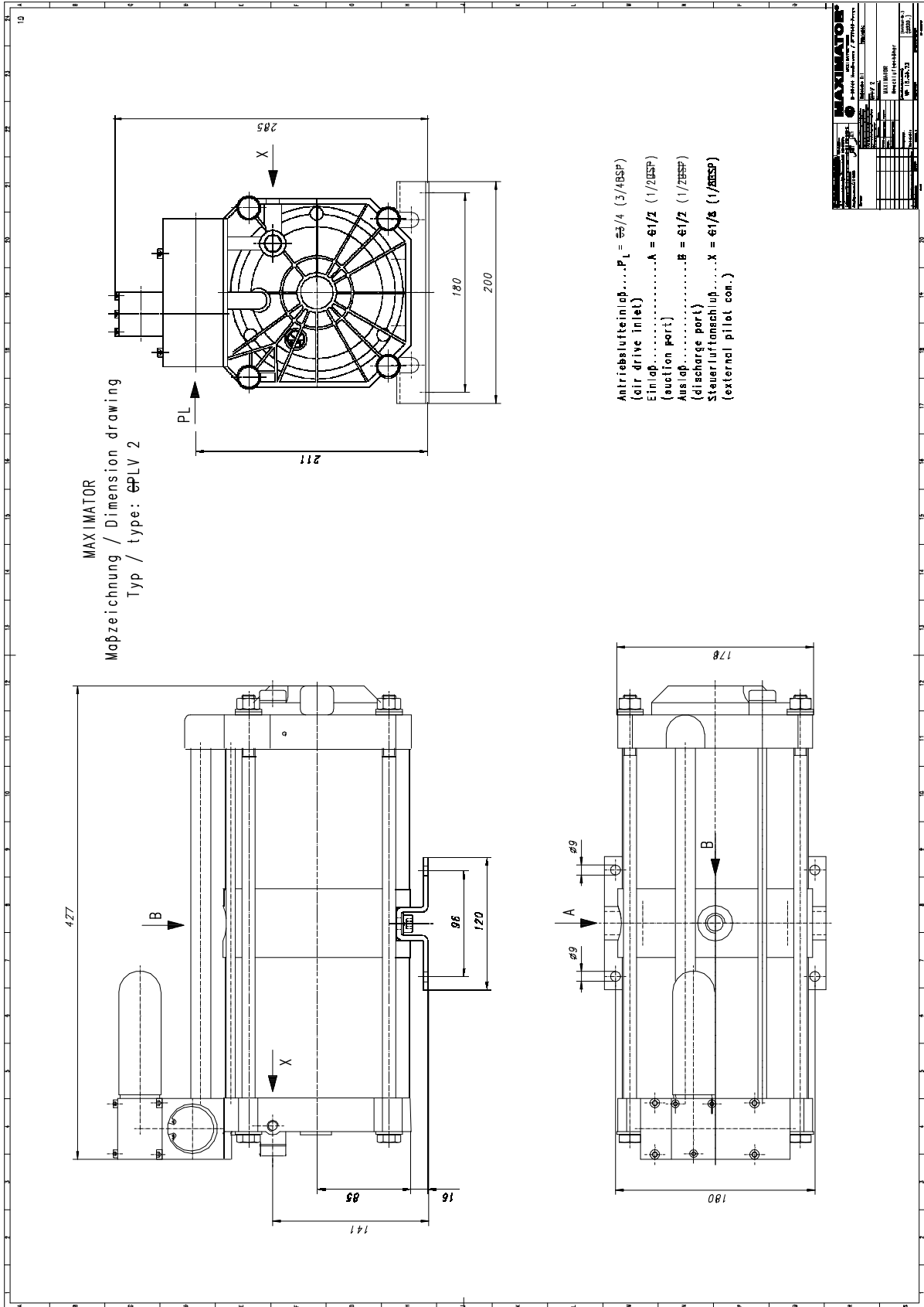
Please consult factory for more information. All technical and dimensional information are subject to change.
All General Terms and Conditions of sale, including limitations of our liability, apply to all products and services sold.

MAXIMATOR®

Maximum Pressure.



High Pressure Technology • Testing Equipment
Hydraulics • Pneumatics





High Pressure Technology • Testing Equipment
Hydraulics • Pneumatics

Performance Graph GPLV 2

For air demand add together outlet flow and air consumption

