



High Pressure Technologies, LLC.

HPT

26364 Ruether Ave
Santa Clarita, CA 91350 U.S.A.
Tel: (661)-251-5069
Fax: (661)-251-6745
<http://www.highpressuretech.com>

8900 & 9000 SERIES FILTERS

Up To 250 PSI



Ask your HPT representative for an Interchange Guide with over 100,000 interchangeable elements.

HOW TO ORDER

EXAMPLE FILTER ASSEMBLY

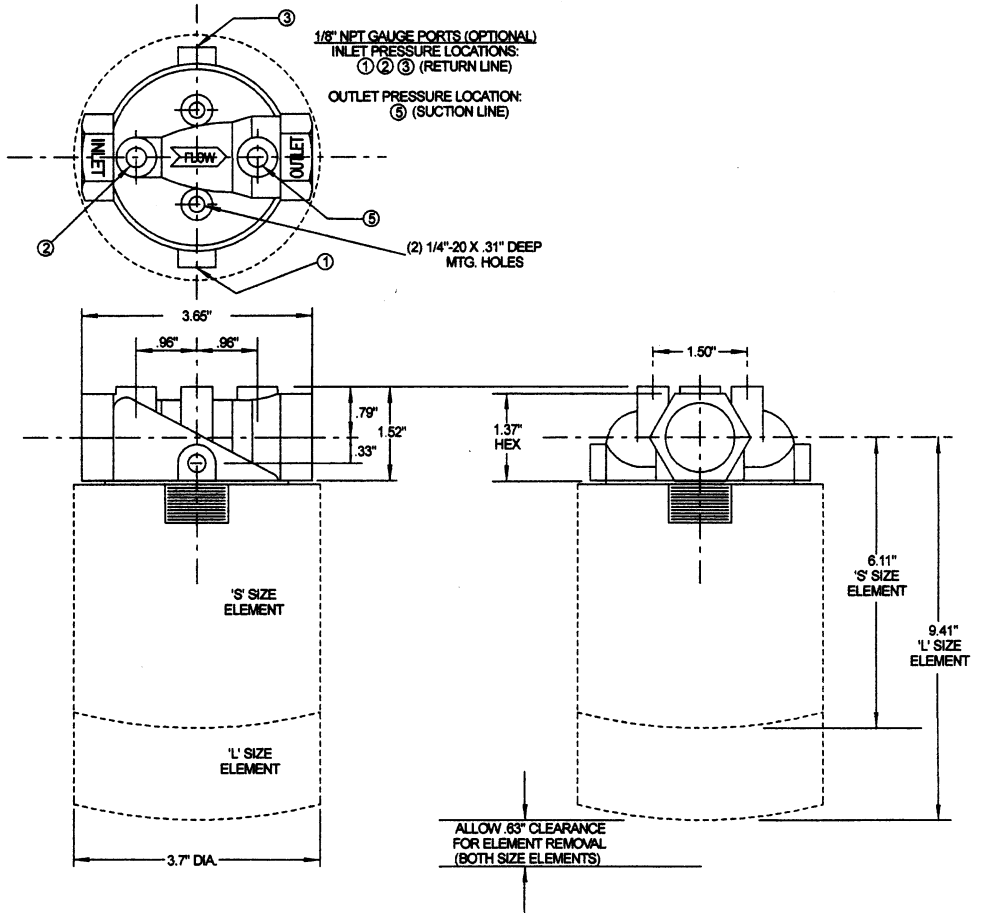
| | | | | | | | |
|-----------|----------|----------|----------|----------|----------|--------------|----------|
| 89 | A | 1 | - | 0 | 0 | -10CL | V |
| | A | B | C | D | E | F | |

EXAMPLE REPLACEMENT ELEMENT

| | | | |
|-----------|----------|-------------|----------|
| 89 | E | 10CL | V |
| | A | E | F |

EXAMPLE HEAD ONLY

| | | | | | |
|-----------|----------|----------|----------|----------|----------|
| 89 | H | 1 | - | 0 | 0 |
| | A | B | C | D | |



A

| CODE | DESCRIPTION |
|------|-----------------|
| A | Filter Assembly |
| E | Element Only |
| H | Head Only |

B

| CODE | PORT SIZE |
|------|------------|
| 1 | 1/2" - NPT |
| 2 | 3/4" - NPT |
| 3 | 1" - NPT |
| 4 | 1/2" - SAE |
| 5 | 3/4" - SAE |
| 6 | 1" - SAE |

C

| CODE | BY-PASS SETTING |
|------|-----------------|
| 0 | No-Bypass |
| 1 | 3-PSI |
| 2 | 5-PSI |
| 3 | 15-PSI |
| 4 | 25-PSI |
| 5 | 50-PSI |

D

| CODE | DESCRIPTION |
|------|---------------|
| 0 | No Gage Ports |
| 1 | Inlet |
| 2 | Inlet |
| 3 | Inlet |
| 5 | Outlet |

E

| CODE | ELEMENT DESCRIPTION |
|-------|-----------------------------------|
| 3CS | 3-Mic. Cellulose |
| 3CL | 3-Mic. Cellulose |
| 3MS | 3-Mic. Abs. Micro Glass |
| 3ML | 3-Mic. Abs. Micro Glass |
| 10CS | 10-Mic. Cellulose |
| 10CL | 10-Mic. Cellulose |
| 10CWS | 10-Mic. Cellulose Water Absorbing |
| 10CWL | 10-Mic. Cellulose Water Absorbing |
| 12MS | 12-Mic. Abs. Micro Glass |
| 12ML | 12-Mic. Abs. Micro Glass |
| 25CS | 25-Mic. Cellulose |
| 25CL | 25-Mic. Cellulose |
| 25MS | 25-Mic. Abs. Micro Glass |
| 25ML | 25-Mic. Abs. Micro Glass |
| 141SS | 100-Mesh Stainless |
| 141SL | 100-Mesh Stainless |

F

| CODE | SEAL SELECTION |
|------|----------------|
| Omit | Nitrile |
| E | EPR |
| V | Viton |

MATERIALS

(Head) Cast Aluminum
(Element) Drawn Steel

Recommended Working Pressure:
250 psig

Rated Flow:
Up to 37 GPM

Temperature:
-65° to +250°F. Operating

Applications:
Petroleum based fluids only.
Consult factory for synthetic fluids.

HOW TO ORDER

EXAMPLE FILTER ASSEMBLY

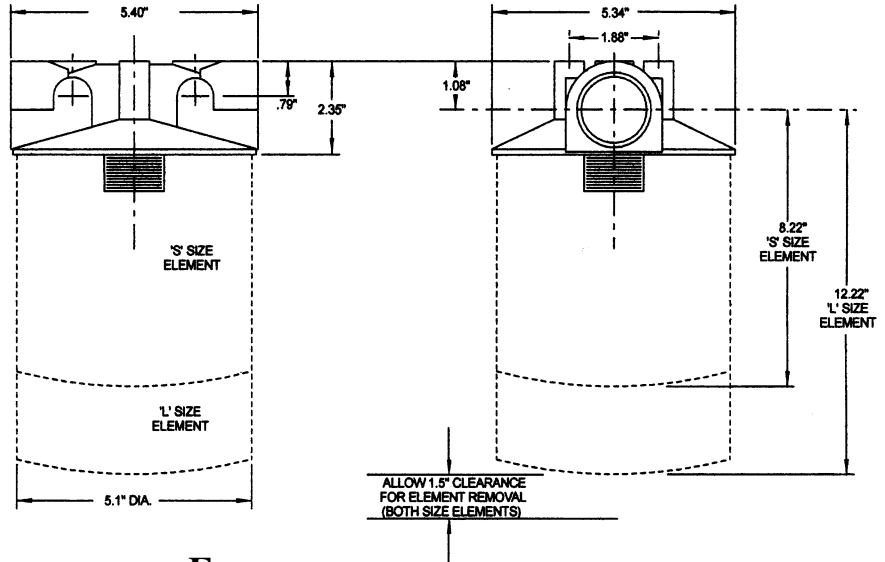
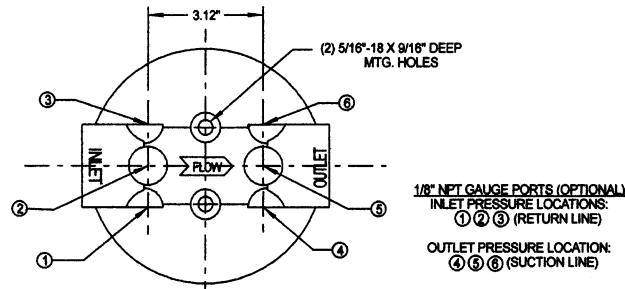
| | | | | | | | | |
|-----------|----------|----------|----------|----------|-----------|----------|------------|----------|
| 90 | A | 1 | - | 4 | 25 | - | 3ML | E |
| | A | B | C | D | E | F | | |

EXAMPLE REPLACEMENT ELEMENT

| | | | |
|-----------|----------|------------|----------|
| 90 | E | 3ML | E |
| | A | E | F |

EXAMPLE HEAD ONLY

| | | | | | |
|-----------|----------|----------|----------|----------|-----------|
| 90 | H | 1 | - | 4 | 25 |
| | A | B | C | D | |



A

| CODE | DESCRIPTION |
|------|-----------------|
| A | Filter Assembly |
| E | Element Only |
| G | 316 Head Only |
| H | Head Only |

B

| CODE | PORT SIZE |
|------|--------------|
| 1 | 1" - NPT |
| 2 | 1-1/4" - NPT |
| 3 | 1-1/2" - NPT |
| 4 | 1" - SAE |
| 5 | 1-1/4" - SAE |
| 6 | 1-1/2" - SAE |

C

| CODE | BY-PASS SETTING |
|------|-----------------|
| 0 | No-Bypass |
| 1 | 3-PSI |
| 2 | 5-PSI |
| 3 | 15-PSI |
| 4 | 25-PSI |
| 5 | 50-PSI |

D

| CODE | DESCRIPTION |
|------|---------------|
| 0 | No Gage Ports |
| 1 | Inlet |
| 2 | Inlet |
| 3 | Inlet |
| 4 | Outlet |
| 5 | Outlet |
| 6 | Outlet |

E

| CODE | ELEMENT DESCRIPTION |
|-------|-----------------------------------|
| 1MS | 1-Mic. Abs. Micro Glass |
| 1ML | 1-Mic. Abs. Micro Glass |
| 3CS | 3-Mic. Cellulose |
| 3CL | 3-Mic. Cellulose |
| 3MS | 3-Mic. Abs. Micro Glass |
| 3ML | 3-Mic. Abs. Micro Glass |
| 6MS | 6-Mic. Abs. Micro Glass |
| 6ML | 6-Mic. Abs. Micro Glass |
| 10CS | 10-Mic. Cellulose |
| 10CL | 10-Mic. Cellulose |
| 10CWS | 10-Mic. Cellulose Water Absorbing |
| 10CWL | 10-Mic. Cellulose Water Absorbing |
| 12MS | 12-Mic. Abs. Micro Glass |
| 12ML | 12-Mic. Abs. Micro Glass |
| 25CS | 25-Mic. Cellulose |
| 25CL | 25-Mic. Cellulose |
| 25MS | 25-Mic. Abs. Micro Glass |
| 25ML | 25-Mic. Abs. Micro Glass |
| 141SS | 100-Mesh Stainless |
| 141SL | 100-Mesh Stainless |

F

| CODE | SEAL SELECTION |
|------|----------------|
| Omit | Nitrile |
| E | EPR |
| V | Viton |

MATERIALS

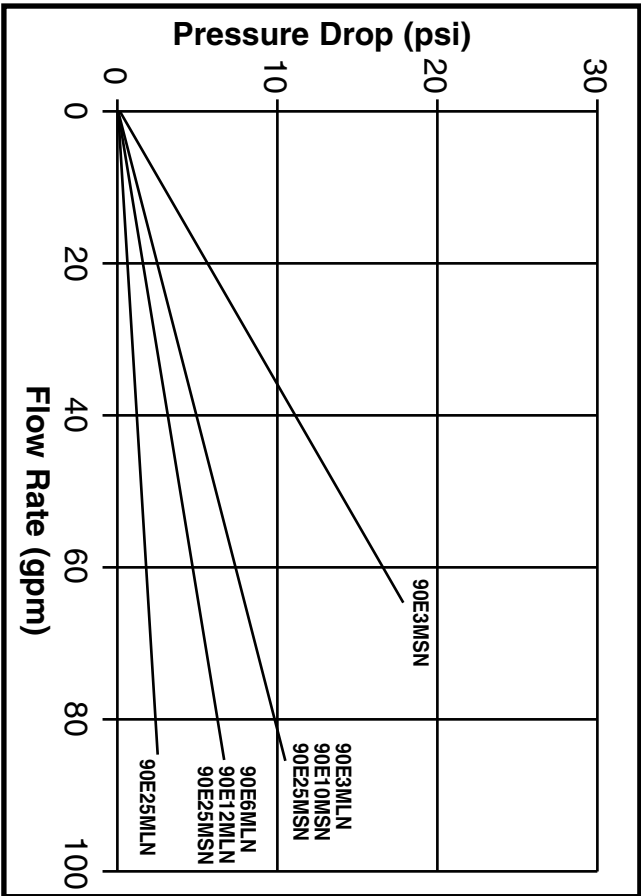
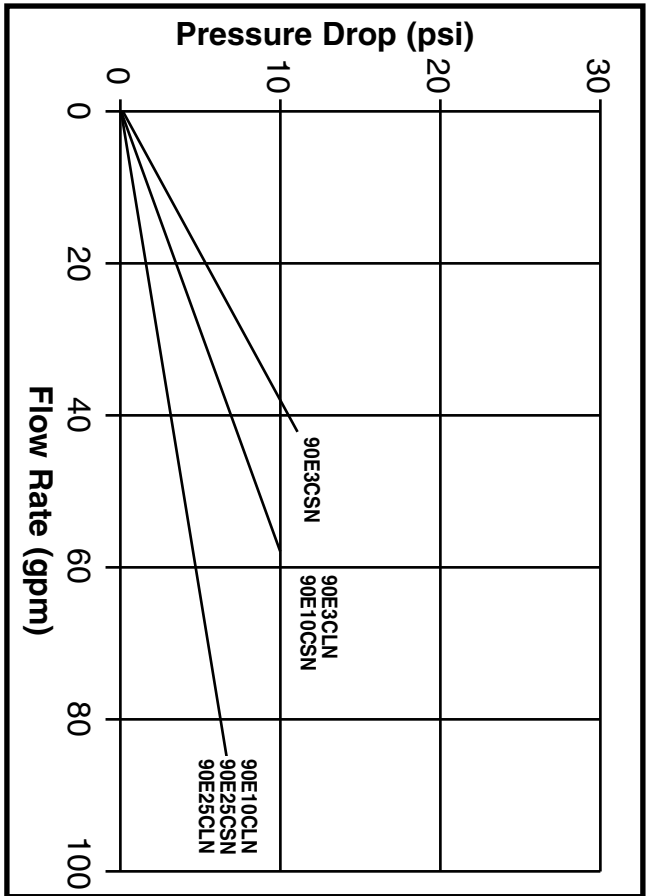
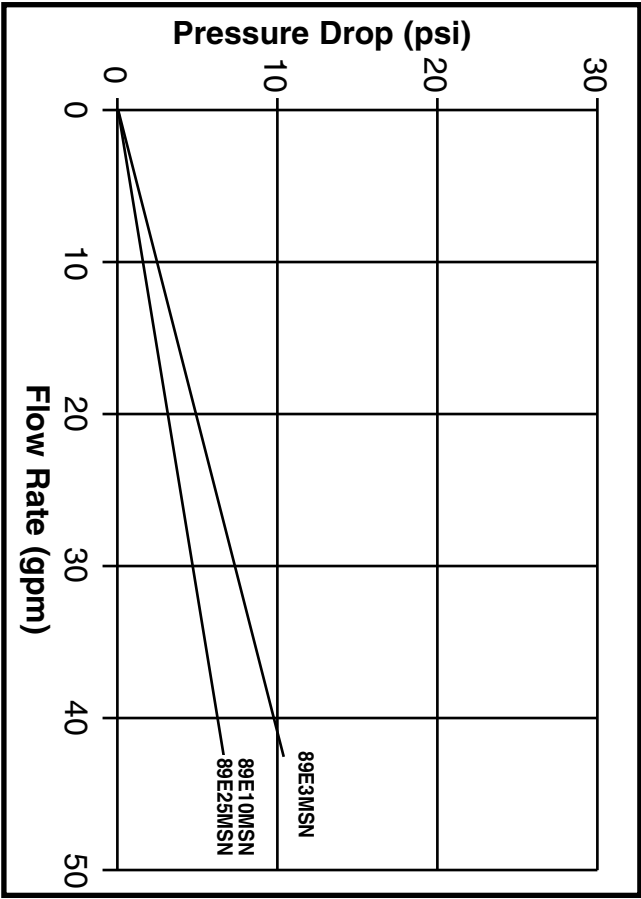
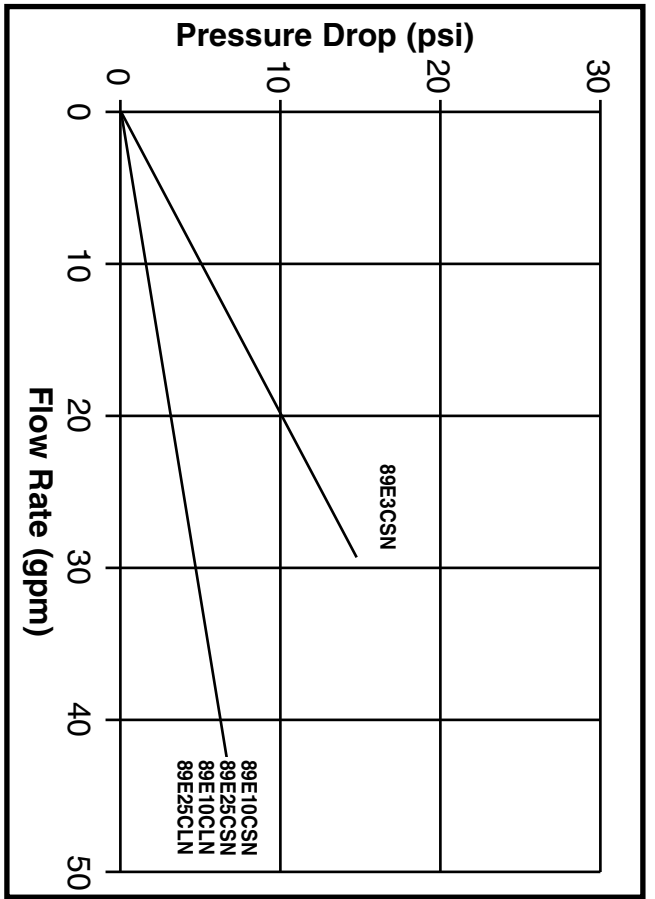
(Head) Cast Aluminum
(Element) Drawn Steel

Recommended Working Pressure:
200 psig

Rated Flow:
Up to 70 GPM (return)
25 GPM (suction)

Temperature:
-65° to +250°F. Operating

Applications:
Petroleum based fluids only.
Consult factory for synthetic fluids.



150 SUS (32 cSt)
Specific Gravity (0.9)



High Pressure Technologies, LLC.

HPT

26364 Ruether Ave
Santa Clarita, CA 91350 U.S.A.
Tel: (661)-251-5069
Fax: (661)-251-6745
<http://www.highpressuretech.com>